

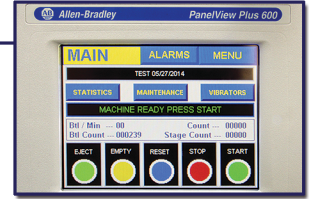
# Rx-12

## HIGH-SPEED PRODUCT COUNT SYSTEM

Rx-12 is a solid dose product count system that combines the high speed of a slat filler with the flexibility of an electronic counter in a small footprint.

At 100 counts, the Rx-12 can reach speeds of up to 60 cpm in a single configuration, 120 cpm in a twin configuration, and 240 cpm in a quad configuration.

The Rx-12 was designed to address a gap in the market where counting speeds drop significantly when running large products including 00, 000, & large nutraceuticals.



### Benefits:

- Improved accuracy over slat fillers and conventional electronic counters
- Increased speed running large pharmaceutical / nutraceutical products
- Compact design requires minimal space on production line
- No product change parts required
- Tool-less changeover of all contact parts in 15 minutes or less
- Designed and manufactured in North America with hassle-free access to technical service and spare parts

514.630.0939  
info@bellatrx.com  
www.bellatrx.com

# BELLATRX

BEYOND EXPECTATIONS



# RX-12

## HIGH-SPEED PRODUCT COUNT SYSTEM



Special considerations put the Rx-12 in a unique position to be able to count both small and large products at high speeds making the Rx-12 ideal for pharmaceutical manufacturers, contract packagers, and nutraceutical facilities who package a wide range of SKU's.

The Rx-12, unlike slat fillers, uses the same set of contact parts for all shapes and sizes eliminating the need to purchase costly slats per product that are easily damaged and require storage.

### Speeds (@ 100-count, 1/4"Ø):

- Single machine: 60 cpm\*
- Twin machine: 120 cpm\*
- Quad machine: 240 cpm\*

### Specifications for Single Rx-12:

- Product range: 2mm to 40mm
- Container range:  
1" to 6", 12" high (26 – 101mm, 304mm)
- Container neck diameter:  
1/2" or larger (13mm)
- Product hopper capacity:  
25 Liters (65 liter available)
- Power requirements:  
120 VAC- 1 – 60 Hz., 25 Amp  
(other voltages and 50 Hz. Available)
- Air requirements: 2 CFM at 90 PSI  
(7 m3/h, 7 bar) (for bottle gating  
and reject)
- Dimensions: 36" W. x 60" L. x 68" H.  
(915 x 1524 x 1728mm)
- Weight: 450 lbs. (205 kg.)
- Construction: cGMP design with  
contact parts made of 316 stainless steel  
and approved plastics

\*(subject to product testing)

### Features:

- Designed for large production runs and a wide range of product sizes and shapes including tablets, capsules, caplets, spheres, and soft gels up to 40mm
- Simple product flow for fast on-the-run adjustments
- Counthead is small and light with a slide system and multiple handles for easy removal
- Pick-n-Place single-piece stage block assembly with rectangular openings eliminates product bridging
- Wider tracks to accommodate large pharma and nutraceutical product sizes
- Diving nozzle prevents dust build-up on the container lip and lost product
- Allen-Bradley color HMI and PLC standard on all Rx-12 counters
- Dust extraction points on product trays
- A wide array of options available including tablet elevators with single or twin discharge
- No calibration requirements
- Extremely quiet operation
- No compressed air required for counting
- Easy access to electrical, electronics, and pneumatics
- Automated preventative maintenance package with replacement alerts

BellatRx is a leading manufacturer of packaging equipment and complete lines serving a broad range of industries including food, beverage, pharmaceutical, nutraceutical, and personal care for solid products, liquids, and powders. As part of continuous improvement, BellatRx Inc. reserves the right to change specifications at any time without prior notice.

Complete Lines • Filling • Capping • Labeling • Inspection • Recovery



BEYOND EXPECTATIONS

14/09 Rx-12